



ASC STATEMENT OF QUALIFICATIONS

SERVICES

The ANTHROPOLOGICAL STUDIES CENTER (ASC) at Sonoma State University (SSU) has been providing consulting services in Cultural Resource Management (CRM), heritage documentation, preservation planning, policy training, community engagement, public outreach, and interpretation since its founding in 1974. Our clients include state and federal regulatory and management agencies, Native American and non-profit organizations, museums and historical associations, regional and municipal utilities, environmental and engineering firms, as well as developers and private individuals. ASC offers a proven team, with exceptional experience, and the skills to provide high quality, timely, and comprehensive deliverables on even the most complex task orders. As part of the California State University system and the M.A. program in CRM at SSU, our commitment to training the next generation of CRM professionals ensures that we always seek to develop innovative approaches, appropriate solutions, and the most effective methods to achieve the regulatory and permitting objectives of our clients. Our services include:

- ***Cultural Resource Management and Heritage Documentation***
 - Historical documents and archival research
 - Property inventories, evaluations, and construction monitoring
 - Archaeological survey, testing, and data recovery
 - Laboratory analyses and curation
 - GIS mapping, predictive models, advanced spatial analyses
 - Significance assessments, and technical reporting
- ***Preservation Planning and Policy Training***
 - Management plans, agreements, and assessment documents
 - Research designs, and evaluation/mitigation plans
 - CEQA and NHPA training workshops
- ***Community Engagement, Public Outreach, and Interpretation***
 - Oral history, ethnography, and intangible resource assessments
 - Native American consultation and NAGPRA inventories
 - Interpretive plans, museum exhibits, media and websites
 - Educational packages and school curricula

EXPERIENCE

The ASC team is notable for the depth of its experience and training. Our permanent staff has over 380 years of combined archaeological experience, with 14 salaried and hourly employees holding M.A. or higher-level degrees, and nine Registered Professional Archaeologists (RPAs). Senior staff members are highly experienced in the requirements for cultural resources identification, evaluation, and mitigation under federal and state laws, regulations, and guidelines, such as: Sections 106 and 110 of the National Historic Preservation Act (NHPA), the California Environmental Quality Act (CEQA), the Archaeological Resources Protection Act (ARPA), etc. We also facilitate tribal consultation, documentation, and repatriations under the Native American Graves Protection and Repatriation Act (NAGPRA) and similar state legislation or directives. The ASC produces stand-alone technical reports or deliverables that are incorporated within other regulatory documents, such as: Environmental Assessments (EAs) or Environmental Impact Statements (EISs), Integrated Cultural Resource Management Plans (ICRMPs), or Department of Transportation Act (DTA) Section 4(F) documents. But we also develop creative mitigation strategies that produce interpretive or interactive exhibits, educational packages, public outreach programs, and other forms of engagement that go beyond technical reporting. These approaches can help defray expensive excavation costs in favor of outcomes that are community and educationally-oriented.

Our deep working knowledge of state and federal regulations, coupled with solid scholarly research, has earned the ASC and its staff numerous awards:

- The California Preservation Foundation's Preservation Design Award (2014)
- The Society for California Archaeology's (SCA) Harrington Award for preservation and public archaeology (2011)
- SCA's Martin A. Baumhoff Special Achievement in Research Award (2006)
- SCA's Thomas F. King Award in Cultural Resources Management (2003)
- The American Society of Civil Engineers Award of Merit (1999)
- The California Governor's Award for Historic Preservation (1999 and 2016)

FACILITIES

The ASC has nearly 10,000 square feet of well-equipped facilities on the SSU campus in Rohnert Park, CA. In addition to administrative and research workspaces, the ASC maintains a full range of field equipment, survey instruments, remotely operated and handheld recording devices, as well as Differential Global Positioning System (DGPS) units. Our facilities include a comprehensive archaeological laboratory supported by a wide range of analytical and technical equipment, plus an extensive library of reference materials and comparative collections. We use the latest versions of Geographic Information Systems (GIS), Computer-Aided Design (CAD), aerial imagery and remote sensing, photo/video editing, Structure from Motion (SFM) photogrammetry, immersive/augmented reality, and both object-editable and photorealistic 3D modeling software to carry out advanced spatial analysis and create interactive and interpretive digital solutions. Notable efforts in this area include extensive experience in large scale archaeological predictive modeling across many environments in North America, as well as recent research into recreating 3D photorealistic environments in submerged coastal settings to assess the effects of sea-level rise both prehistorically and into the future as the result of climate change. Innovative digital technologies are being employed in many aspects of both CRM and environmental resource management.

The ASC's David A. Fredrickson Archaeological Collections Facility (ACF) is the primary repository for artifact collections and associated documents from the San Francisco Bay Area and northwestern California. This facility currently contains more than 500 individual collections, comprising many thousands of artifacts. It consists of over 3,500 square feet of curation space and is supported by an endowment of over \$1,000,000 from curation fees. The Office of Interpretive and Outreach Services (OIOS) within the ASC interprets archaeology, history, and ethnography to the general public through events, student tours, pamphlets, museum displays, websites, and various forms of multimedia. These facilities are intended to provide long-term curation of the material remains excavated by ASC staff and many other CRM firms and state agencies across California, as well as develop creative and engaging ways of bringing archaeology and history to the general public.



CLIENTS

Within California alone, the ASC has completed hundreds of projects for federal, state, and local agencies, and worked for dozens of municipal and private utilities, environmental planning/architectural/engineering firms, tribal and non-profit organizations, and private individuals. We also have extensive experience in neighboring states and across the Western US. Additionally, our staff have a great deal of archaeological, historical, and regulatory experience across North America, the Caribbean, Europe, Asia, and Australia. It is that range of experience that allows us to bring a highly skilled consultative perspective to our clients. Our objectives are to facilitate an effective and efficient permitting process, while training the next generation of CRM professionals. A few examples of our agency clients are as follows:

Federal Agencies

- US Army Corps of Engineers
 - South Pacific Division
 - San Francisco District
 - Sacramento District
- Bureau of Land Management
 - Arcata Field Office
 - Redding Field Office
 - Alturas Field Office
 - Surprise Field Office
 - Ukiah Field Office
 - Eagle Lake Field Office
 - Folsom Field Office
- Bureau of Reclamation
 - Mid-Pacific Region
- Environmental Protection Agency
 - Pacific Southwest, Region 9
- Bureau of Ocean Energy Management
 - Pacific Region
- Department of Agriculture
- General Services Administration
- National Forest Service
- National Park Service

State Agencies

- CA Department of Fish and Game
- CA Department of Forestry
- CA Department of Justice
- CA Department of Parks and Recreation
- CA Department of Transportation
- CA Department of Water Resources
- CA State Lands Commission
- CA Water Resources Control Board

Local Agencies

- Contra Costa County
- Marin County
- Sacramento County
- San Francisco City and County
- San Joaquin County
- Santa Clara County
- Solano County
- Sonoma County
- Calaveras County Water District
- Contra Costa Water District
- El Dorado Irrigation District
- Nevada Irrigation District

PERSONNEL

ASC has a staff of 15 permanent full-time and 24 intermittent professionals with a long history of working cooperatively in the field, in the lab, and on report development. This team of regular employees gives ASC an advantage over consultants who must hire personnel at all levels to meet project needs. ASC also has a large pool of short-term hourly employees available.

ASC's Director is Dr. Tom Whitley, an archaeologist with over 30 years of experience in CRM; he is also an SSU faculty member. Full-time ASC staff members include a business manager, historical and prehistoric archaeologists, a historian, an oral historian, historical researchers, a laboratory manager, a faunal specialist, GIS specialists, computer specialists, editors, and graphics technicians. All senior staff meet the Secretary of the Interior's Professional Standards for their particular disciplines; nine staff members are Registered Professional Archaeologists; one is a CCPH Registered Professional Historian. Many of our staff are OSHA HAZWOPER-certified with all required refresher training. We also have staff members who are CAL-OSHA certified for trenching and shoring and for confined-space work.

It is ASC's policy as part of the University to prohibit discrimination against any applicant or employee because of race, sex, creed, color, religion, national origin, marital status, pregnancy, citizenship, age, sexual preference, Vietnam era veteran's status, or disability within the limits imposed by law. ASC is an affirmative action/equal opportunity employer and promotes employment opportunities for women, minority group members, Vietnam era and disabled veterans, persons with disabilities, and persons aged 40 and over. The full text of the University's Non-discrimination Plan is available online at:

<https://www.sonoma.edu/uaffairs/policies/discrimination.htm>.

KEY STAFF

Thomas Whitley, ASC Director



Education: Ph.D., Anthropology, University of Pittsburgh 2000, M.A., Anthropology, University of Pittsburgh 1990, B.A., Anthropology, University of Washington 1987.

Professional Registration: Registered Professional Archaeologist (since 1998)

Experience: 30 years in archaeology, second year as director of ASC.

DR. THOMAS WHITLEY oversees every aspect of ASC project management. He has over 30 years of experience in Cultural Resources Management (CRM). In all, he has directed more than 700 projects in the USA, Western Europe, Australia, the Caribbean, Japan, and the Middle East. He specializes in archaeological applications of GIS and spatial analysis, particularly in the areas of interpreting cognitive landscapes, remote sensing, human ecology, complex socio-economic simulations, and predictive modeling. His topical specializations include CRM law and theory, industrial archaeology, contact and colonialism, perishables analysis, the archaeology of labor, and mining landscapes.

Professor Whitley teaches CRM in the graduate program at Sonoma State University and prior to that he was at the University of Western Australia where he coordinated the Masters of Professional Archaeology program from 2013 to 2016. Recently, he has been working on a series of research projects including:

- A GIS-based economic simulation of Switzerland's Helvetia during the Gallic Wars using models of human energetics.
- Bathymetric modelling of sea-level change and drowned landscapes (to 50,000 BP) of Northwestern Australia using GIS and 3D photorealistic visualizations.
- Completing a textbook entitled "New Perspectives on Archaeological Predictive Modeling" based on new approaches to the theory and practice of archaeological predictive modeling.

He is an active member of a number of professional organizations such as the Society for American Archaeology (SAA), the Society for Historical Archaeology (SHA), the American Cultural Resources Association (ACRA), the Australian Archaeological Association (AAA), and the Computer Applications and Quantitative Methods in Archaeology Conference (CAA). He also serves on the Science Advisory Board for Digital Antiquity, and on Commission 4 of the International Union for Prehistoric and Protohistoric Sciences (*Union Internationale des Sciences Préhistoriques et Protohistoriques* – UISPP).

Adrian Praetzellis, ASC Director Emeritus



Education: Ph.D., Anthropology, University of California, Berkeley, 1991

Professional Registration: Registered Professional Archaeologist (since 1983)

Experience: 44 years in archaeology, 40 years with ASC.

DR. ADRIAN PRAETZELLIS has over 25 years of experience as Principal Investigator on cultural resource projects in California. He has directed the inventory, excavation, and National Register evaluation of numerous historic and prehistoric archaeological sites. A specialist in CEQA and NHPA Section 106 compliance, he has taught cultural resources management to graduate students, government agencies, and Native American tribes. Since 2008, Dr. Praetzellis has been external staff City of San Francisco Planning Dept. representing the Environmental Review Officer in archaeological issues for City projects outside the City limits.

Dr. Praetzellis has directed scores of projects involving inventory, evaluation, and/or mitigation of impacts to archaeological and vernacular architectural properties in urban and rural settings. He has made many presentations at professional meetings and to lay groups, taught archaeology to Native American tribes, designed archaeology-oriented museum exhibits and websites, authored numerous technical studies, and published dozens of monographs, books, reviews, and articles. Dr. Praetzellis is the recipient of the Society for California Archaeology's Thomas F. King Award in Cultural Resources Management and the Mark Raymond Harrington Award in Conservation Archaeology. In 2013, Gov. Jerry Brown appointed Dr. Praetzellis as prehistoric archaeologist to the State Historical Resources Commission.

Mary Praetzellis, Associate Director, Historical Archaeologist



Education: M.A., Cultural Resources Management, Sonoma State University, 1982; B.A., Anthropology, University of California, Berkeley, 1971

Professional Registrations: Registered Professional Archaeologist (since 1985); Registered Professional Historian #513, California Council for the Promotion of History (since 1985)

Experience: 42 years in archaeology, 40 years with the ASC.

MARY PRAETZELLIS is ASC's Associate Director, responsible for fiscal and human resource matters. She prepares and budgets task orders, and manages internal scheduling so that projects are finished on time and on budget. Ms. Praetzellis serves as liaison between the client, ASC staff, and consultants; solving problems as needed, tracking time and budgets, and designing innovative but appropriate products. This involves the coordination of up to 50 employees and consultants from a range of disciplines. She has managed contracts totaling over twenty million dollars.

Ms. Praetzellis is a Registered Professional Archaeologist and a Registered Professional Historian. She has prepared and implemented major historical overviews and research designs for the cities of Sacramento, San Francisco, San Jose, and Oakland, as well as for mining properties in the High Sierra and rural properties in northern California. Ms. Praetzellis focused on developing histories based on multidisciplinary research in archaeology, history, architecture, material culture, folklore, and oral history, writing about the lives of dozens of African-American, Jewish, Chinese, and Euro-American households. She has authored or co-authored over 28 papers for presentation at professional meetings and organized 10 symposiums, authored or co-authored over 60 major technical reports, and published more than 40 articles and reports.

Giovanna Rossetti, Business Manager



Education: M.A. Public Administration, California State University Chico, 2003; B.A. Sociology, California State University Chico, 2001.

Experience: 12 years in administrative work, 8 with ASC.

GIOVANNA ROSSETTI is responsible for developing and overseeing fiscal policies and procedures, including internal budgets, personnel costs, accounts payable, receivables and reconciliations, and indirect cost allocations. She interfaces with other campus entities to ensure compliance with SSU and Foundation rules and regulations. Ms. Rossetti supervises the office administrative staff and helps initiate and coordinate some ASC hires. She has extensive experience working with the public in a variety of settings, providing flexibility and timely customer responsiveness.

Bruce D. Owen, Editor/Archaeologist



Education: Ph.D., Anthropology, University of California, Los Angeles, 1993; M.A., Anthropology, University of California, Los Angeles, 1986; B.A., Anthropology, Yale University, 1983

Professional Registration: *Registro Nacional de Arqueólogos, Perú* (since 1988)

Experience: 35 years in archaeology, 13 years with ASC.

BRUCE D. OWEN has conducted statistical data analyses for ASC since 2003, and is now the editor for ASC publications. Dr. Owen has directed research and archaeological salvage projects in southern Peru, including systematic archaeological site surveys and residential and mortuary excavations, and has conducted quantitative analyses of artifact collections from these and other projects. His publications and conference presentations range from site reports and interpretations, to broad reconstructions of prehistoric events, to analyses of ceramic assemblages, bronze artifacts from Machu Picchu and the rest of the Inka empire, metal production debris from the Chimu site of Chotuna, evidence of early agriculture in the valley of Ilo, the marine carbon reservoir and radiocarbon dates, analyses of mortuary gravelots and demographics, kite aerial photography for mapping, GIS studies of prehistoric settlement patterns, and quantitative analyses of collections from ASC's West Oakland Cypress Freeway Replacement and San Francisco West Approach and Bayshore Viaduct projects.

Dr. Owen was the founding director of the *Museo Contisuyo*, a museum, curation, and research center in Moquegua, Peru. He is currently the Secretary and Treasurer of the Institute of Andean Studies, and he has taught undergraduate courses in archaeology, cultural anthropology, and biological anthropology at Sonoma State University since 1996.

Mark Selverston, Archaeologist



Education: M.A., Cultural Resources Management, Sonoma State University, 2000; B.A., Anthropology, University of California, Santa Barbara, 1991

Professional Registration: Registered Professional Archaeologist (since 2000)

Experience: 29 years in archaeology, 17 years with ASC.

MARK SELVERSTON meets the Secretary of Interior's Standards for Prehistoric and Historical Archaeology. He is the project manager responsible for quality assurance, personnel, budgets, and compliance of three multi-year investigations: (1) the Malakoff Diggins–North Bloomfield Historic District Remediation Project, which will inventory and evaluate the world's most renowned hydraulic gold mine; (2) the Saddleback Ranch Cultural Resources Research Project, which draws students and professionals together to inventory and study Browns Valley Ridge, Yuba County; and (3) the Empire Mine Historic District Remediation Project, involving survey, evaluation, and treatment of remains of California's hard-rock gold-mining history in the Empire Mine State Historic Park and updating the property's National Register of Historic Places listing while the State executes remediation projects. He also manages inventory and testing projects at Sierra District state parks, including Bodie, Burton Creek, Emerald Bay, and Plumas Eureka.

Mr. Selverston has 29 years of experience as project manager, director, crew chief, and field technician on prehistoric and historic-era surveys and excavations in Butte, El Dorado, Los Angeles, Mono, Nevada, Placer, Plumas, Riverside, San Benito, San Diego, Sonoma, Santa Barbara, Tuolumne, Ventura, and Yuba counties, California. He specializes in the Sierra Nevada, especially gold-mining resources from sites to landscapes. From 1992 to 1996 he coordinated, provided technical assistance, and directed portions of evaluation studies on 39 historic sites, and data recovery of 9 of them, for the Metropolitan Water District's Eastside Reservoir Project, using recovered data to address research design themes. Mr. Selverston directed survey and testing of hundreds of historic-era sites for the Oroville Facilities Relicensing Project, Butte County. He has worked in Chiapas, Mexico; Laetoli, Tanzania; and at the Northwest Information Center of the California Historical Resources Information System for three years as Records Search Coordinator. His MA focused on excavating an adobe homestead on an early Russian colony in Sonoma County and preservation of cultural resources on private property. He has authored, co-authored, or contributed to over 55 technical reports, and has presented 9 papers at professional meetings, including those of the Society for California Archaeology, the Society for Historical Archaeology, and at the Great Basin Anthropological Conference. Mr. Selverston has completed the CAL-OSHA approved Hazardous Waste Site Worker's Health and Safety Training program with annual 8-hour refresher courses.

Michael D. Meyer, Archaeologist



Education: M.A., Cultural Resources Management, Sonoma State University, 1998; B.A., Anthropology, University of California, Berkeley, 1983

Professional Registration: Registered Professional Archaeologist (since 1999)

Experience: 33 years in archaeology, 25 years with ASC.

MICHAEL D. MEYER meets the Secretary of Interior's Standards for both Prehistoric and Historical Archaeology. He has extensive experience in historic and prehistoric archaeology, and is an expert in 19th-century material culture. He has worked on multi-component sites in Virginia, Alabama, Nevada, and California. His experience in historic-period sites includes early 17th-century sites on the James River, 18th-century Colonial Williamsburg, and a wide range of 19th-century sites. In California these include residential and commercial sites in the Bay Area and Sacramento, Overseas Chinese and brothel sites in downtown Los Angeles, military and Spanish Colonial sites in the Presidio of San Francisco, Fort Ross, and the multi-component Brown Ranch in the Owens Valley. Mr. Meyer has also directed linear surveys along State Route 4 and 395 for Caltrans. He has authored and co-authored reports for numerous projects in California, Alabama, and Nevada, and assisted in development of ASC's field cataloging and archaeological context recording forms. Mr. Meyer's M.A. investigations focused on the history and archaeology of a city block in West Oakland.

Mr. Meyer has completed the CAL-OSHA approved 40-hour Hazardous Waste Site Worker's Health and Safety Training program with 8-hour annual refreshers, and the CAL-OSHA Competent Person training for confined space and trenching and shoring.

Mark Walker, Historical Archaeologist



Education: M.Phil. Archaeology, Cambridge University, 1989; B.A., Anthropology, George Washington University, 1984

Experience: 30 years of experience in archaeology, 15 years with ASC.

MARK WALKER meets the Secretary of Interior's Standards for Historical Archaeology and is HAZWOPER certified. He has extensive experience in the survey and excavation of both urban and rural historic archaeological sites ranging from a 17th-century Maryland settlement to a 20th-century coalminer's strike camp in Colorado. He has directed over 30 projects in Maryland, Virginia, Washington D.C., New York, Colorado and California for a wide range of private clients and local, state, and federal agencies, including the California Department of Water Resources, the El Dorado Irrigation District, Caltrans, the US Environmental Protection Agency, and the Presidio Trust. Recent work has included assisting with Native American consultation and cultural resource protection in the Valley Fire emergency response, identification and evaluation of historic properties as part of remediation of the Argonaut Mine, and providing cultural resource services for the Central Subway Project in San Francisco and for remediation of contaminated properties in Eureka NV.

Mr. Walker's research interests include issues of class and political economy in U.S. history with a focus on 20th-century rural industry and labor. He has presented over 20 professional papers, and has published in both scholarly and public venues on various aspects of archaeology including teaching, public interpretation, industrial archaeology, and labor history.

Sandra Massey Konzak, Archaeologist



Education: M.A., Cultural Resource Management, Sonoma State University, 2006; B.A., Anthropology, Sonoma State University, 2000

Professional Registration: Registered Professional Archaeologist (since 2006)

Experience: 16 years in archaeology, 15 years with ASC.

SANDRA MASSEY KONZAK has worked with ASC as a project manager and technician for 15 years, and currently serves as coordinator of the David A. Frederickson Archaeological Collections Facility. Her experience involves many aspects of California archaeology, including excavation, survey, artifact analysis, and historical research. She has served as field director for excavations at Fort Ross State Historic Park and in downtown San Francisco, directed surveys at Pinnacles National Monument, overseen laboratory processing and cataloging of artifacts from prehistoric and historic-period sites, and has

authored and co-authored numerous technical reports for ASC. Sandra has also helped to produce public interpretation products for the Golden Gate National Recreation Area and San Francisco Public Utilities Commission. She specializes in historical archaeology, with a particular interest in the archaeology of urban development. Sandra's M.A. work focused on the analysis of artifacts from a 19th-century household in San Francisco. She has completed the CAL-OSHA approved 40-hour Hazardous Waste Site Worker's Health and Safety Training program with annual 8-hour refresher courses.

Michael Konzak, Archaeologist, GIS Specialist



Education: M.A., Archaeology and Prehistory, 2004, University of Sheffield, United Kingdom; B.A., Anthropology, High Honors, University of California, Berkeley, CA, 2002

Professional Registration: Registered Professional Archaeologist

Experience: 13 years in archaeology, 7 years with ASC.

MICHAEL KONZAK meets the Secretary of Interior's Standards for both Prehistoric and Historical Archaeology. He has run projects with historic-era and prehistoric components for numerous state, federal, and private entities. He has authored and co-authored dozens of CEQA and Section 106 reports. Mr. Konzak has extensive experience surveying, recording, and excavating prehistoric and historic-era archaeological sites throughout California as crew, crew chief, and field director. Mr. Konzak has completed a CAL-OSHA approved 40-hour Hazardous Waste Site Worker's Health and Safety Training program.

Mr. Konzak is also a GIS (Geographic Information Systems) specialist with ASC. He is responsible for developing and maintaining GIS and Microsoft Access databases. As part of the GIS department, he creates maps and GIS projects from multiple data sources including GPS and Total Station data, CAD and engineering data, geo-referenced historic maps, raster and vector based coverages, and other non-spatial databases. He has used GIS to perform spatial analysis, 3D modeling and geo-processing, and to produce large format display maps and graphics. He is experienced in ESRI and Trimble software, and in the application of GPS and Total Station equipment for mapping of archaeological features, sites, and landscapes.

Mr. Konzak has worked with CRM students in the field and office, instructing in general field and recording techniques, digital mapping with GPS and Total Station, GIS, and database creation and management.

Dana Ogo Shew, Archaeologist/Oral Historian, Certified Interpretive Planner



Education: M.A.,
Archaeology, University of
Denver, 2010; B.A., Theatre,
University of California,
Irvine, 1999

Experience: 9 years in
archaeology, 5 years at ASC.

DANA OGO SHEW received her M.A. from the University of Denver, where she completed a thesis that explored the lives of women at Colorado's WWII Japanese internment camp, Amache. In

addition to archaeological data collected in the field, a large component of her master's project involved collecting oral histories and sharing her research with descendant communities and the general public. Her work with Japanese-American history continues today through a recently completed oral history project funded by a Cal Humanities grant that explored the stories of Japanese-American flower growers.

Ms. Shew is currently completing a National Endowment for the Humanities grant that has helped fund the Amache Digitization Project. The Project aims to preserve and share objects and materials from Amache by digitizing them through scans and photographs. The Project has digitized over 300 items from the personal collections of Amache survivors and their descendants. This digital collection will be shared with several repositories including Sonoma State University Special Collections. As a part of the grant Dana also curated a museum exhibit at the Sonoma State University Library Gallery highlighting the creativity and ingenuity of Amache internees.

Dana serves as the historian, oral historian, and interpretive specialist for ASC, researching contextual histories for various historic-era projects, collecting the oral histories of those whose memories add insight and depth to our projects, and creating interpretive products to share with the public. In addition to her experience with these aspects of the recent past, Ms. Shew also has field and lab experience associated with prehistoric sites in Utah, Arizona, and eastern California.

Whitney McClellan, Administrative Archaeologist



Education: M.A., Cultural Resource Management, Sonoma State University, 2015; B.A., Anthropology, minor in Paleontology, Sonoma State University, 2012.

Experience: 6 years in archaeology, 6 years with the ASC.

WHITNEY MCCLELLAN is the Administrative Archaeologist at Sonoma State University. She frequently works simultaneously between the ASC Archaeology Lab; processing historic and prehistoric artifact collections, and ASC Administration. She is responsible for ASC administrative tasks such as internal budget tracking, personnel costs, payroll and billing processing as well as organizing employee administrative training and ASC guest tours. In addition to her administrative responsibilities,

Whitney specializes in faunal remains analysis, human osteology, and historic and prehistoric artifact analysis. Whitney has experience in a variety of regions throughout California. These include: San Francisco Bay Area, Central Coast, Southern California Coast, Channel Islands, Mojave/Great Basin, Central Valley, and the Eastern Sierras.

Scott McGaughey, Archaeologist



Education: M.A., Cultural Resources Management, Sonoma State University 2017, B.A., Anthropology, University of Massachusetts Boston 2013.

Experience: 4 years in California prehistoric and historical archaeology, four years with the ASC

SCOTT MCGAUGHEY recently received his M.A. in Cultural Resources Management from Sonoma State University. He has worked on a number of projects throughout Northern California and has overseen a range of archeological projects for ASC. Mr. McGaughey is responsible for contracting, budgeting, field study, research, GIS analysis, and report production on his projects. He

has experience in both prehistoric and historic archaeological site survey and excavation in California and the northeast United States.

During his time at ASC, Mr. McGaughey has gained experience as a project manager, crew chief, and field technician and regularly prepares cultural resource technical reports for both State and Federal compliance. Recently, Scott has taken on the role of ASC's Small Project Coordinator, giving him the opportunity to train and supervise graduate student employees at ASC.

Samantha Dollinger, Archaeologist



Education: M.A., Cultural Resources Management, Sonoma State University 2017, B.A., Anthropology, San Diego State University 2011, B.A. Journalism, San Diego State University 2011.

Experience: 5 years in California archaeology, four years with the ASC.

SAMANTHA DOLLINGER has worked with several state and federal agencies including National Park Service and CAL FIRE throughout California. She has worked with the CAL FIRE Northern Region State Archaeologist for a year reviewing Forest Practice Rule reports, and curating the extensive CAL FIRE collection. Samantha is also responsible for managing field and resource review studies for both State and Federal compliance throughout Northern California. Samantha has advanced experience using Geographic Information Systems and has some experience working with Ground Penetrating Radar.

Her geographical specialties include the California coast, Santa Catalina Island, the Mojave and Colorado Deserts, and Sonoma, Napa, and Marin counties. Her topical specializations include cultural landscapes, desert mining archaeology, rock art, shell analysis, and redwood forest environments. She has been an active member of the Society for California Archaeology (SCA) for three years.

Bryan Mischke, Archaeological/GIS Specialist



Education: B.A. Anthropology, University of Oregon, 1992

Experience: 23 years in archaeology, 14 years with ASC.

BRYAN MISCHKE is a GPS (Global Positioning System) and GIS (Geographic Information Systems) specialist with ASC. He is responsible for developing and maintaining GIS databases from multiple data sources including GPS and Total Station data for historic and prehistoric archaeological sites, georeferenced historic maps, and raster- and vector-based coverages. He uses these GIS databases to perform spatial analysis, modeling and geo-processing, and to produce large format display maps and graphics. He is experienced in ESRI ArcGIS and ArcView software, and in the application of Trimble GPS and Total Station equipment to mapping archaeological sites. In addition, Mr. Mischke has extensive experience as an archaeological field technician, and is skilled in survey, excavation, monitoring, and site recording for both prehistoric and historic-era archaeological sites. Mr. Mischke has completed a CAL-OSHA approved 40-hour Hazardous Waste Site Worker's Health and Safety Training program.

Michael Stoyka III, Archaeological/Faunal Specialist



Education: Core requirements attained at the Southampton Center of Long Island University for Marine Geology and Marine Chemistry.

Experience: 45 years in archaeology, 23 years with ASC.

MICHAEL STOYKA has had experience as a technician, Site Health and Safety Officer, crew chief, or field supervisor on more than 1,000 cultural CRM projects. He is expert in the excavation of historic-era and prehistoric archaeological features, the excavation of human skeletal remains, and the field identification of osteological material, and is a consultant to the Sonoma, Lake, and Napa County Sheriff Department. His general skills also include reconnaissance and remote-sensing survey, recording of prehistoric and historic sites and features using GPS and Total Station technologies, heavy equipment monitoring, use of the Harris Matrix during excavation of complex historic sites, field supervision, archival research, scientific illustration, flotation, site analysis, and technical writing.

Mr. Stoyka has worked on numerous historic and prehistoric surveys and urban excavations including sites in New York, New York; Albany, New York; Washington D.C.; Philadelphia; Los Angeles, Oakland, Sacramento, Stockton, San Francisco, and Puerto Rico. He is experienced with rural historic sites including farmsteads and work camps, with mining landscapes, and with desert and Great Basin archaeology. Mr. Stoyka has completed a CAL-OSHA approved 40-hour Hazardous Waste Site Worker's Health and Safety Training program, with an additional Hazardous Site Supervisor course, and annual 8-hour refresher courses since 1987. Mr. Stoyka also has Confined Space, Competent Person, First Aid/CPR, AED, and PADI SCUBA certifications for Open Water, Nitrox, and Altitude diving.

Maria Ribeiro, Archaeological/Production Specialist

Education: B.A., Anthropology, Sonoma State University, 1994

Experience: 18 years in archaeology, 16 years with ASC.

MARIA RIBEIRO has professional experience in archaeological survey, excavation, and report production in California. She is a Report Production Coordinator for ASC, preparing high-quality graphics and formatting for technical and interpretive reports. She is proficient in a range of graphics and publication software including Microsoft Word, Adobe InDesign, Acrobat, Illustrator, Photoshop, and Dreamweaver, and ESRI ArcGIS. Ms. Ribeiro has had extensive experience in the preparation of site recording forms, and was the Site

Records Coordinator for the Northwest Information Center of the California Historical Resources Information System for four years.

Nelson B. (Scotty) Thompson, Archaeologist



Education: B.A., Anthropology, Sonoma State University, 1974; College of Marin 1968–1970; U.S. Army Security Agency Training School, Ft. Devens, Massachusetts, 1965 graduate [Mos 05K20]

Experience: 41 years in archaeology, 41 years with ASC.

SCOTTY THOMPSON has served ASC in various capacities over the years. Between 1976 and 2012 he worked on over 100 archaeological surveys, as project coordinator on 48 of them, and on 40 excavation projects. During most of his career with ASC, Scotty has specialized in field mapping, cartography, photography and illustration. A number of his maps and graphics have been published in the archaeological literature. These days he is ASC's Computer Hardware Manager and an occasional project coordinator or participant on local Caltrans maintenance projects. He also helps to maintain ASC's corporate memory about projects from earlier days, since he has been with ASC throughout most of its history.

Doshia Dodd, Archaeological/Office Assistant



Education: B.A. Anthropology, Sonoma State University 2016

Experience: 2 years in Archaeology, three years with the ASC

DOSHIA DODD is the Archaeological and Office Assistant at the Anthropological Studies Center, Sonoma State University. She frequently works simultaneously between the ASC Archaeology Lab; processing historic and prehistoric artifact collections, and ASC Administration. She is responsible for ASC administrative tasks such as internal budget tracking, personnel costs, payroll and billing processing, as well as conducting ASC guest tours. In addition to her administrative responsibilities, Doshia specializes in archeobotany, paleoethnobotany, and historic and prehistoric artifact analysis. Doshia has experience in a variety of regions throughout California. These include: San Francisco Bay Area, North Coast Ranges, High Sierras, and the Sacramento Valley.

Ryan Poska, ASC Lab and Field Technician



Education: B.A., Anthropology, B.A., History, University of California, Berkeley 2013; M.A. student in Cultural Resource Management

Experience: 7 years' experience working in CRM and academic archaeology, 3 years with the ASC.

RYAN POSKA is a lab and field technician at the ASC, working mainly with GIS and other mapping tasks, but also participating in survey projects. Ryan specializes in historical archaeology and is currently working on a Master's Thesis on culture contact and colonialism in the Cache Creek and Clear Lake regions. Ryan has also studied remote sensing techniques in archaeology including Lidar remote sensing and ground penetrating radar technologies. Ryan is expanding his knowledge of geomorphology, soil science, and paleo ethnobotany.

Robert Watson, Archaeological Assistant



Education: B.A, Anthropology with minor in Paleontology, Sonoma State University 2013; M.A. student in Cultural Resource Management, Sonoma State University

Experience: 4 years in archaeology, 2 years with ASC.

ROBERT WATSON is a graduate student in the Cultural Resource Management program at Sonoma State University. He has experience in both historical and prehistoric archaeology throughout California. Robert has worked on several projects with ASC and has been a research assistant with the Pimu-Catalina Island Archaeological Project. He is interested in historical material culture and collections management.

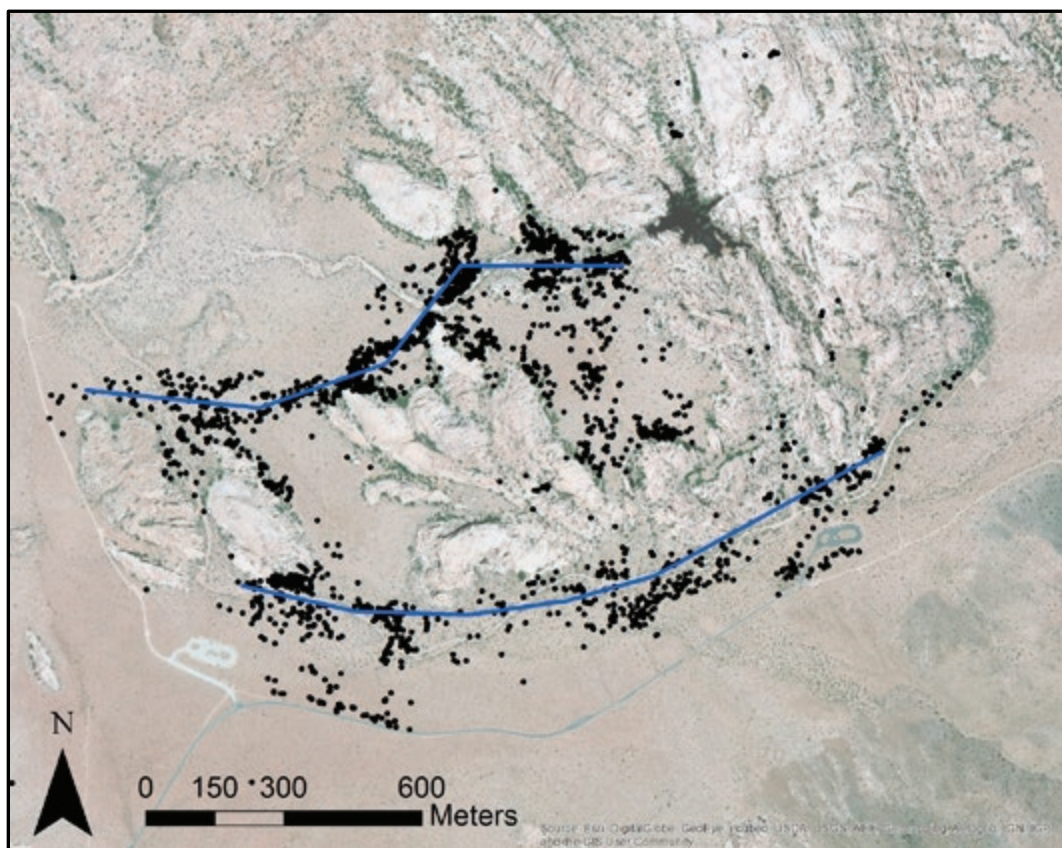
RECENT PROJECTS EXAMPLES

Joshua Tree National Park (Prehistoric Archaeology)

Client: National Park Service

Location: Joshua Tree National Park, California

The ASC conducted archaeological research at Joshua Tree National Park through our cooperative agreement with the National Park Service from 2007 until 2015. A wide breadth of field studies has been completed, including numerous site condition assessments, multiple large surveys, and archaeological excavation. Findings combined with ongoing research went into development of an Archaeological Overview and Assessment for the park that summarizes 40 years of archaeology, assesses the archaeological sensitivity of various zones, and provides recommendations for future research. Evaluation efforts concluded that many sites are eligible for listing in the National Register of Historic Places as elements of the Southern Wonderland of Rocks National Register District.



Two hypothesized trails within the Barker Dam vicinity of Joshua Tree National Park. The black dots represent indigenous artifacts.

Eureka Mills (Historical Archaeology and Interpretation)

Client: California Department of Parks and Recreation

Location: Plumas Eureka State Park, Placer County, California

Eureka Mills was a small gold-mining town in the high Sierra Nevada during the last quarter of the 19th-century. It began when the London-based Plumas Eureka Gold Mining Company consolidated Gold Rush-era claims, opened a new mine portal into Eureka Peak, and constructed the Mammoth Mill near the adit. The small town complete with numerous family dwellings, businesses and schoolhouse formed around the Company's buildings and crowded boarding house. Within a decade a new stamp mill built downslope replaced the Mammoth and another town, Johnsville) developed nearby. Eureka Mills slowly declined and when the company halted operations by the end of the century the town was abandoned. DPR elected to thin the forest that has been establishing in the ruins of Eureka Mills, and ASC participated in the project by subsequently recording the remains and helping design an interpretive panel. The project rekindled the park association to lead new tours to the site, and monitor it closely for signs of vandalism. ASC designed a new interpretive panel that has been installed at the site.



ASC survey crew below "Gold Mountain".

Central Subway (Urban Archaeology)

Client: Central Subway Partnership

Location: San Francisco, California

San Francisco Municipal Transportation Agency (SFMTA) is constructing the Central Subway from King Street in the South of Market area to Chinatown. The undertaking will eventually comprise several miles of underground tunnels, one surface station, three subway station facilities, and support facilities. ASC has been assisting the Central Subway Partnership with their cultural resources compliance needs since 2010. We have prepared numerous planning documents including program and site-specific research designs and treatment plans, monitoring and testing plans, and testing and data recovery reports. Both prehistoric and historic-era resources are being addressed. A large stratified prehistoric midden was encountered in multiple construction areas. The 1,400 to 3,000 year old deposit contained an outstanding collection of fish and fowl bone. Three dimensional rendering helped understand the shape and nature of the deeply buried deposit. Historic-era components recovered include an 1860s privy of early Jewish settlers and a basement associated with Chinatown's garment industry. Archival research and oral history discovered the collection belonged to Chan Hing Wong, a merchant and editor of the Chinese Free Press.



Excavation of a historic-era feature.

Malakoff Diggins State Historic Park (Mining Landscapes Specialty)

Client: California Department of Parks and Recreation

Location: Malakoff Diggins State Historic Park, Nevada County, California

The North Bloomfield Gravel Mining Company's Malakoff Mine is the best-known hydraulic mine in the world. It is on the National Register of Historic Places as the Humbug Diggins – North Bloomfield Historic District. One of its legacies is a huge and colorful open pit that now drains sediment and potentially heavy metals into the Humbug, Yuba, and Sacramento watersheds. Planning is underway to address the problem. ASC and DPR initiated a multi-year project to inventory the 3,000-acre park and evaluate the significance of identified resources. The scale of the resource also demands that a landscape study be carried out. ASC began the inventory phase, relying heavily on prior surveys and aerial LIDAR. Using our expertise with gold-mining resources, we have reconstructed the complex evolution of the large Malakoff operation from its inception in the 1850s by French-speaking immigrants until its abandonment in the early 20th century, long after the famous Sawyer Decision of 1884, which prohibited hydraulic mines from dumping debris into the valley.



Survey crew within the Malakoff Mine pit.

Amache Digitization Project (Public Interpretation)

Client: National Endowment for the Humanities

Dana Shew and Adrian Praetzellis were awarded a Common Heritage grant from the National Endowment for the Humanities in support of the Amache Digitization Project. The project focuses on digitizing photographs, objects, documents, and memories to preserve and share the experiences of World War II Japanese American internment at Colorado's internment camp, Amache. Although the Amache Museum and other repositories have very rich and full collections, many former Amacheans and their descendants still have countless items in their personal collections. The Amache Digitization Project encourages those with Amache-related objects to participate in the project so that the memories, experiences, and lessons represented by these objects will be preserved and shared. A Day of Digitization was held in April at the Enmanji Buddhist Temple in Sebastopol with the help of the Sonoma County Japanese American Citizens League. An exhibit at the Sonoma State Library Art Gallery in Fall 2016, "Creativity Unconfined: Life in a World War II Japanese American Internment Camp," highlighted the creativity that persisted in camp despite the harsh and unjust conditions.



Whitney McClellan photographing a trunk for the Amache Digitization Project.

DETAILED EXPERIENCE

ASC has vast experience in prehistoric, historical, and urban archaeology, historic architecture, community outreach and education, and cultural resources legislation. We were among the first to incorporate a broad-spectrum approach to cultural resources investigation, including environmental studies, intensive archival research, and engagement with Native Americans and invested communities in all project phases. ASC was also the first to develop the cost-effective and time-efficient Consolidated Approach to meeting archaeological compliance requirements. The Consolidated Approach collapses the identification, evaluation and data recovery phases into a single operation through the application of a detailed research design and work plan. It was formalized in 1993 for Caltrans and has since become common practice.

ASC's technical reports are well-regarded for their thoroughness, organization, and well-reasoned evaluations of resources and assessments of project effects. We have long been recognized for excellence in prehistoric and historic archaeological research, timeliness in submission of project deliverables, and our staff's professional conduct. ASC has also developed sensitivity studies that identify locations of, and risks for, historic and prehistoric sites prior to survey. ASC has taken the lead in presenting the results of compliance archaeology to the public by means of interpretive essays, websites, publications, and presentations. Our commitment to furthering community engagement means that we will continue to take the lead in developing innovative approaches to public outreach for all forms of cultural resources. Our major project technical and popular reports always pursue historical and anthropological research questions and are readable and interesting to community members as well as scholars. This work is published, online, and widely available; examples can be viewed at ASC's publications page: <http://www.sonoma.edu/asc/publications/index.html>.

Through its long history in California archaeology, ASC has developed several unique tools for research and analysis: ASC's Oral History and Historic Photograph Archive contains many hundreds of transcribed and taped interviews and historic documents and photographs. ASC's Faunal Comparative Collection contains over 300 skeletons of mammals, birds, and fish that are used in the identification and analysis of food bones from prehistoric and historical archaeological sites. The Seed Comparative Collection contains over 500 species. ASC's Directory of Ceramic and Glass Makers' Marks is a unique resource of many hundreds of manufacturers' marks and business histories. ASC's innovative Sonoma Historic Artifact Research Database (SHARD) was developed in-house for categorizing, cataloging, reporting, and analyzing large historic-era collections. ASC has made SHARD publicly available, facilitating comparisons across projects conducted by other institutions and firms.

Historical Archaeology

ASC has specialized in historical archaeology since the late 1970s, when Adrian and Mary Praetzellis excavated a full block within the city of Sacramento, uncovering numerous early deposits associated with the Golden Eagle Hotel and other Gold Rush businesses. Later, they excavated two city blocks in Sacramento's historic Chinese district, unearthing a wealth of material on the city's Chinese pioneers. We have continued to address historic-era cultural resources in urban settings of Oakland, San Francisco, San Jose, and Los Angeles.

ASC has added rural historical archaeology and mining landscapes to its repertoire over the decades. Large reservoir projects, such as, Los Vaqueros Reservoir, and Oroville Reservoir, as well as Caltrans study areas, such as the Cypress freeway, have given us substantial experience in addressing a wide variety of historical remains within CEQA and Section 106 contexts. The Golden State also has numerous cultural resources associated with its gold and other mineral mining legacy. ASC has studied hundreds of them and is today recognized as one of the leading authorities in mining sites and landscapes. Presently we are consulting on a number of remediation projects addressing the toxic legacy of mining. We have also successfully nominated the Black Diamond Mines and the Empire Mine historic districts to the National Register of Historic Places.

Prehistoric Archaeology

ASC founder David Fredrickson was a pioneer in studying indigenous archaeological sites in California. He wrote what are, to this day, benchmark works on the prehistoric archaeology of California. ASC has continued to build upon these early experiences. We recently completed several prehistoric archaeological projects across the state. For years, ASC has worked under a cooperative agreement with the National Park Service at Point Reyes National Seashore, Golden Gate National Recreation Area, Redwoods National Park, and Joshua Tree National Park. For nearly two decades, ASC staff and SSU graduate students have been conducting research at dozens of prehistoric archaeological sites at Point Reyes National Seashore, and have prepared a regional research design. At Joshua Tree National Park, ASC prepared the Park's Archaeological Overview and Assessment (AOA), which provides a wide range of information, including sensitivity studies tied to vegetation models, overviews of previous research, proposed locations of unrecorded archaeological sites based on early 20th century artifact collections, and a robust research design.

We are currently involved in several prehistoric archaeological projects, including an excavation and analysis of a substantial shell midden deposit for the Central Subway Project in San Francisco, and long term studies on the prehistory of Browns Valley Ridge, Yuba County. Staff and students are investigating bedrock mortars and exploring new ways to extract meaning from this ubiquitous feature. ASC's recently completed study of potential impacts on indigenous sites from impending climate change has been used to launch similar studies elsewhere in the state.

Tribal Consultation

Since 1974, ASC has approached prehistoric archaeology with a sensitivity and respect for the concerns that modern indigenous communities have for the places of their ancestral heritage. The ASC staff includes individuals trained in addressing ethnic group concerns with regard to Traditional Cultural Properties. Through hundreds of projects, we have built excellent working relationships with tribal communities, as well as with the Native American Heritage Commission in Sacramento. ASC has served as an advisor on federal grants for several tribes, including the Federated Indians of Graton Rancheria (FIGR), the Kashia Band of Pomo Indians of the Stewart's Point Rancheria, and Yoche Dehe Wintun Nation. Several tribal representatives from FIGR, Yoche Dehe, and Stewart's Point have participated in ASC archaeological internships over the past decade. ASC also conducts workshops for tribes on archaeology and historic preservation.

ASC has partnered with local tribes on many occasions. In the first such effort, ASC set up and facilitated the Native American Advisory Council as a part of the Corps of Engineers' Warm Springs Dam–Lake Sonoma Project in the mid-1970s. More recently, ASC developed and organized a training program that enabled members of three tribes to work alongside our staff in the inventory of the Lake Oroville FERC relicensing project area for the California Department of Water Resources. ASC staff members have recently completed collaborative research projects with Caltrans and the Stewart's Point Rancheria and a climate-change study in cooperation with FIGR and Point Reyes National Seashore.

Public Interpretation and Civic Engagement

ASC has always recognized the importance of engaging with the public and involving various communities in its work whenever possible. ASC's commitment to public interpretation and civic engagement can be seen through the wide range of interpretive projects it has been involved in throughout the years including public interpretive displays and signs, museum exhibits, interactive websites, interpretive booklets and newspapers, and community events. Some recent examples of interpretive products developed by ASC include interpretive outdoor signs for Malakoff Diggins State Historic Park and Plumas Eureka State Park, preliminary drafts of walking and driving tours of the Kashaya Band of Pomo Indians coastal area, a digital guide book of historic places, people, and events of Lands End in the Golden Gate National Recreational Area, and a museum exhibit on WWII Japanese American internment as part of a National Endowment for the Humanities grant.

In addition to developing and producing interpretive products, ASC also has experience in interpretive planning. The ASC researched and authored the *Interpretation Master Plan for Malakoff Diggins State Historic Park*, which has helped the Park prioritize its needs and find funding support for several interpretive projects. ASC staff was also a part of the interpretive planning team that produced the *Hard Rock Interpretive Center and Osborn Hill Interpretive Program Plan for Empire Mine State Historic Park*.

Cartographic and GIS Services

ASC maintains a suite of electronic surveying equipment, including a Trimble Total Station and resource-grade GPS and DGPS units, including Trimble GeoXH and GeoXT handheld receivers. ASC can provide accurate, precise recording of cultural resources with centimeter accuracy using total stations, and meter to sub-foot accuracy using DGPS receivers. Tablets with mobile database and GIS technology are utilized in field for site recording and construction monitoring. Staff members have extensive experience using these technologies in all phases of fieldwork, from inventory surveys to evaluation and data recovery excavations, on both prehistoric and historic-era sites.

ASC uses the latest ESRI ArcGIS software for analyzing spatial data at the artifact, feature, site, landscape, and regional level; for preparing feature, site, project, and APE maps; for developing site-predictive models based on environmental, cultural, geographical, and other variables; for using data ranging from scanned and georeferenced historic maps to LiDAR data to assist in identifying resources and potentially sensitive areas; and for developing cultural resource management databases for resource agencies. ASC staff also includes highly experienced graphics specialists who use Adobe, ESRI and other graphics software to prepare figures and graphics and produce reports.

Our staff have also been involved in the development of more advanced spatial analysis, 3D modeling, and remote sensing. This includes a wide range of approaches to archaeological predictive modeling, handheld and remotely-operated photogrammetry and terrain modeling, Ground-Penetrating Radar (GPR), immersive and photorealistic 3D model development, agent-based and multi-agent simulation, and augmented reality. These techniques are carried out with GIS and other technical software such as Agisoft's Photoscan, Autodesk's 3D Studio Max, Planetside's Terragen, MeshLab, Unity, NetLogo, and the Adobe Creative Suite. Advanced technical applications are useful in nearly every phase of project work; from conception to public outreach. Our approach is to use techniques that provide cost-effectiveness, interpretive advantages, and enhance public education.

Business Services and Accounting Controls

ASC's business office is administered by Giovanna Rossetti, who coordinates with SSU's Grants and Contracts office and accounting staff. ASC's accounting system is designed to deal with Firm-Fixed Price, Labor-Hour, or Time-and-Materials projects under multiple task orders. ASC financial procedures and records have passed audits by state agencies such as the California departments of Transportation and Water Resources on numerous occasions with no significant findings. ASC internal controls have passed audits performed in accordance with the standards established by the Institute of Internal Auditors. As part of the California State University system, ASC policies, procedures, internal controls, and accounts are audited annually by outside firms conducting campus-wide and system-wide audits. ASC produces comprehensive financial statements and reports as requested by clients in a timely manner.

ASC Health and Safety

ASC actively addresses health and safety issues. We maintain an overall Health and Safety Plan that has been praised for its thoroughness and quality. In addition, a Health and Safety Plan is developed for every project, addressing specific project needs and emergency procedures. ASC senior staff members are fully aware of OSHA regulations that are relevant to archaeological work environments. ASC maintains a field crew composed of staff members with 40-hour HAZMAT training with annual 8-hour refresher certificates. Members of this team are enrolled in the ASC's medical monitoring program. Some staff have Title 8 "Competent Person" training for trenching, shoring and for confined spaces, as well as first aid/CPR training.